

Pak Wattan School And College Of Sciences Havelian
Scholarship/Entrance Test Session 2024-25
Model Paper

Grade: 6th

Time: 2hrs

Name Student: _____

Father Name: _____

Date: _____

Roll No:

Math	English	G. Knowledge	Urdu	Interview	Total Marks	Obtain Marks	% age
/20	/25	/20	/ 25	/10	100		

Note: MCQ's will be included from the given subject. Diagram will be given for labeling. The given MCQ's are as sample

Math: 10 Mcq's Marks, Subjective 10 Marks
Science: 10 Mcq's Marks, Subjective 10 Marks
English : 10 Mcq's Marks, Subjective 15 Marks

General knowledge : 10 Mcq's Marks, Subjective 10 Marks
Urdu: 10 Mcq's Marks, Subjective 15 Marks
Interview: 10 Marks

Math

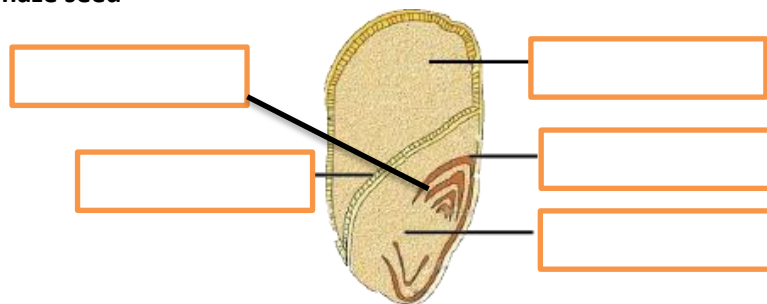
<p>i. The value 2 in the number 6,985,621</p> <p>a. 2 b. 20 c. 200 d. 20,00</p> <p align="center">A B C D</p>	<p>ii. Prime factorization of 16 is</p> <p>a. 2 x 8 b. 1 x 16 c. 2 x 2 x 2 x 2 d. 4 x 2 x 2</p> <p align="center">A B C D</p>
<p>iii. $\frac{2}{3} - \frac{5}{9} =$</p> <p>a. $\frac{3}{9}$ b. $\frac{7}{3}$ c. $\frac{1}{9}$ d. $\frac{7}{9}$</p> <p align="center">A B C D</p>	<p>vi. Two angles are _____ if their sum is 180°</p> <p>a. supplementary b. complementary c. adjacent d. non adjacent</p> <p align="center">A B C D</p>
<p>v. 20 % of 540 is _____</p> <p>a. 37 b. 103 c. 27 d. 270</p> <p align="center">A B C D</p>	<p>vi. Area of rectangle is $45m^2$. if its length is 15m then its width is</p> <p>a. 6m b. 3m c. 5m d. 15m</p> <p align="center">A B C D</p>

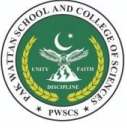
Frictions its Types, words problem, Measurements, Decimal values and operations on decimal Percentage, ,Algebra, Geometry

Science

<p>v. A fish respire through _____ organ</p> <p>a. gills b. lungs c. Air sacs d. skin</p> <p align="center">A B C D</p>	<p>ii. _____ is cause of polio disease</p> <p>a. worms b. virus c. fungi d. bacteria</p> <p align="center">A B C D</p>
<p>iii. A substance that allow electricity to pass through it is</p> <p>a. conductor b. insulator c. semiconductor d. superconductor</p> <p align="center">A B C D</p>	<p>vi. The amount of fresh water on the earth is</p> <p>a. about 1% b. about 30% c. about 70% d. about 97%</p> <p align="center">A B C D</p>
<p>v. Light travel in the air</p> <p>a. in a circle b. along curved path c. straight line d. dispersed pat</p> <p align="center">A B C D</p>	<p>vi. current can easily pass through</p> <p>a. steel paper clip b. glass strip c. plastic comb d. wooden spoon</p> <p align="center">A B C D</p>

Q: Label the diagram of maze seed





Pak Wattan School And College Of Sciences Havelian

Scholarship/Entrance Test Session 2024-25

Model Paper

English

i. They found it much better to _____ by the fire. a. sit b. stand c. lie d. fight A B C D	ii. They are _____ to Lahore. a. go b. going c. goes d. went A B C D
ix. A path along which electric current flow is a. bulb b. conductor c. insulator d. circuit A B C D	iv. Antonym of Reduce a. Increase b. Decrease c. Limit d. Lessen A B C D
ix. A path along which electric current flow is a. bulb b. conductor c. insulator d. circuit A B C D	vi. _____ has nothing to do with hydropower a. burning b. gravity c. sun d. Water cycle A B C D
Sentences, Essay, Masculine , Feminine , Word opposite ,Synonyms Antonyms, Singular Plural, Application, Story, Use of articles, Noun , Pronoun,	

Urdu

۱۰۔ نسبت سے پکارے جانے والے نام کو _____ کہتے ہیں ا۔ لقب ب۔ کنیت ج۔ خطاب د۔ تخلص A B C D	اسم علم کی اقسام ہیں۔ ا۔ چار۔ ب۔ پانچ۔ ج۔ چھ۔ د۔ سات۔ A B C D
شاعر کا مختصر نام کیا کہلاتا ہے۔ ا۔ تخلص۔ ب۔ لقب۔ ج۔ خطاب۔ د۔ عرف A B C D	محاورہ و ادانت کھٹے کرنا سے مراد ہے ا۔ شکست دینا۔ ب۔ فتح حاصل کرنا۔ ج۔ آگور کھانا۔ د۔ اہلی کھانا A B C D
۷۔ موجود اڑو کے معنی _____ ہیں ا۔ ملکہ ب۔ رانی ج۔ مہارانی د۔ شہزادی A B C D	۸۔ جملے کے _____ حصے ہوتے ہیں ا۔ دو ب۔ تین ج۔ چار د۔ پانچ A B C D
مونث مزکر، واحد جمع، الفاظ متضاد، الفاظ مترادف، درخواست، کہانی، مضمون، گرامر	

Never Say Die
Proud Pakians